

SAMBHAV SOCIAL SERVICE ORGANIZATION
Gwalior
ANNUAL REPORT -2004

The organization is completing its 16th year. Starting from the release of Bonded Labour in 1986, it has gone on reaching more people. Today, Sambhav is present in the districts of Gwalior, Shivpuri, Sheopur, Datta and Bhind in Gwalior regions and Tikamgarh and Chhatarpur of Sagar division, Lalpur district in UP.

Goal of Sambhav- To build democratic, equitable and environmentally sustainable societies

Mission- Striving for sustainable development processes through organization and capacity building to bring qualitative improvement in lives of deprived people.

Women empowerment in Ghatigaon, Gwalior

In Ghatigaon Sambhav is involved in promotion of Self Help Groups. There are 175 Groups with a membership of 1917. Total Savings of groups 10 lakhs. Bank Loan 6, 65,000 all the groups have their accounts in banks and are maintaining information systems. A federation of these groups has been formed with the name of Sampurna Mahila Vikas Sangh. It is registered under Cooperative Act. It has started working and expected to become a MFI to encourage socio-economic development of the women in particular the Sahariya women.

Sahariya Jan Andolan is an apex network of the Sahariya and continues to raise the issues of the community through representation, media and other Advocacy efforts. The project has been able to reach out Sahariya in almost all the hamlets and villages of Ghatigaon, Bhitarsar blocks of Gwalior. This program is completely managed by the women of the groups.



Mahila Kranti Manch (MKM) Cluster level Sammelans 4
Annual consultation of SJA
Rally and demonstration 5
Information Resource centre 2
Youth training four
SHG training 15
Staff Training 5
PRI training 7

Parivartan- PACS

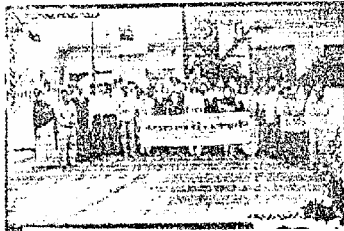


Parivartan project is completing 21 months. During this period, the project has been able to recruit personnel's, conduct participatory appraisal and implement the planned activities. The overall aim of the project is to influence the forces that lead to deprivation and backwardness of people. Parivartan has taken challenge of bringing about a shift in the climate causing malnutrition, loss of natural resources and gender bias. The distance between government administration and community is decreasing. It has been hard to capture all the happenings in the project area yet below is an effort to draw a brief picture of the activities been done.

The project is operating in three blocks Tal Behat, Rajnagar, Prithvipur each in Lalitpur, Tikamgarh and Chatarpur districts. It covers 3 blocks, 355 villages and 195 Panchayats. Project population 4, 14,465.

Project Outputs-

SHG 300, Activities by SHG- shops, earthen pots, basket making, plants nurseries



Village Development Committee Trainings 30

TBA Trainings 24

Trainings of SHG Members 45

PRI Trainings 18

Information Centers- 195

Health Camps 15

Support for Pulse Polio campaign

Wall Writing

Survey on Poverty Profile

Survey on Right to food

Integrated Education for blind children

Jan Shakti Samitis

Communication Program on Women Empowerment, Rights of the People.

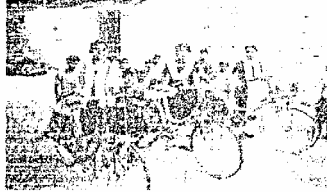
Village Micro Plans prepared

Rallies for Girls Education

Sambhav Cadbury Community Initiative Programme

It is a program to prepare adolescent girls and women to organize and resist the practice of female infanticide and violence against women. It covers three villages of Gunkha Panchayat. Activities implemented in the project during 2004 are-

- Library for Children
- Girls Education Sammelans, Training of PTA
- Workshop on Elimination of Child Labor
- Training of 19 SHGs



- Education Centre for Girls-39 Girls enrolled
- Health Camps 45, Workshop on violence against women
- Veterinary Health Camps-33 camps, 475 animals given treatment
- House Hold Toilet Construction
- Women SHGs
- Support for ICDS & Plantation

Integrated Education for Visually Challenged Children

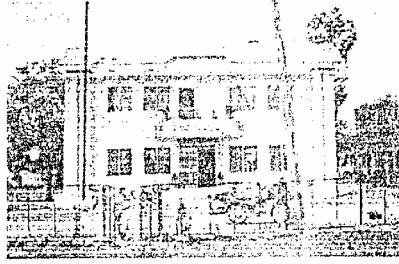
In Shivpuri Block of 25 visually challenged Children and Prithvipur, block of Tikangarh 20 visually challenged were identified.

28 children are being provided Integrate Education. Five IE teachers are engaged in this program. In Prithvipur, in addition to IE program, children with Multi Disability will be included in a special initiative to focus on the specific needs. It will cover labour 8 children with MDVI. Survey is complete, teacher trainings are going on. Teaching activities have also begun in Shivpuri.

Community Based Rehabilitation Program for VI Persons

For a population of two lakhs people, a CBR program is in progress. It covers Rural Block of Shivpuri and some urban slums of Shivpuri. Following activities are done in 2004

- Survey and Report compilation
- Trainings of the CBR workers
- Total Blinds identified 275
- Children with Visual impairment 40
- 60 Adults provided with Daily Living Skills, and Orientation
- 127 persons received Certificates, 54 given bus passes and 19 included for Pension cover.



Shri Padamasambhav Hospital-Shivpuri

An eye hospital has been established in Shivpuri. It is equipped with all basic facilities. Its services are- vision testing, correction of refractive errors, Cataract operations and IOL implantation. The Hospital provides highly subsidized services to the tribal and women and other poor population. In 2004, following have been output of the hospital.

Out Patients examined	7213
IOL Cataract operations	1457
Vision test	5421
Glasses given	188
Screening camps	78



Reproductive and Child Health Programme under MNGO scheme , Supported by Ministry of Health and Family Welfare

Sambhav has supported several NGOs in this program.

Main Objectives of the program are- Reduce IMR and MMR, Women and child health, Adolescent Health, Small Family Norms and Treat and Prevent STD, RTI and HIV/AIDS.

Total FNGOs	19
Total Blocks	19
Total Districts	6
Total villages covered	553
Total Population covered	5, 34,293

**Water and Sanitation programs- Gwalior Urban Slums,
Shivpuri Rural and School Sanitation program, Lalitpur**



Gwalior- It covers a population of 21,565 in 10 slums.

- Tap Repairs 258, 12 major leakages in main water supply,
- 63-Household toilets through women SHGs
- One Kitchen Garden, plantation in 80 houses
- 24 Women Groups with 298 members
- 2 groups of Adolescent Girls Groups
- 12 SHG of 160 members, 366 patients seen in health camps and treated for water borne diseases, two cultural groups of children, Regular meetings with community groups



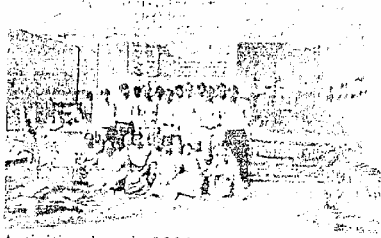
Shivpuri

The project works in three Panchayats. It covers a population of 7772.

- Bore well with handpumps 2
- One washing Platform
- House Hold Latrines.
- Compost pits 14
- Activation of School Committee-8
- Leadership Trainings for 28 persons
- Care Takers Training
- PRI Trainings

Lalitpur

It is a model project exclusively working with the Schools in 20 schools in Jakhora Block. It covers 12 Panchayats. Total Population 23116. Total students covered are 6371.



Activities done in 2004

- Meetings of Teachers association
- Formation of Children Committee.
- Bal Sansad at school and cluster level
- Competition on Sanitations and hygiene
- Teachers training
- Repair of toilets and new 4 toilets were added.
- 16 old handpumps repaired and two new handpumps erected
- Garbage pit in the school, soak pits at the handpumps in all the schools
- Sanitation campaign in 16 villages